

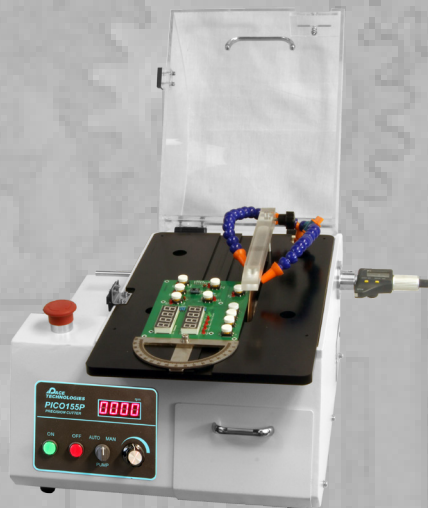
PACE[®] TECHNOLOGIES

www.metallographic.com

Low/Medium Speed Precision Cutting Saw

- Precise cutting
- Internal coolant pump
- Digital feedback speed control
- LED speed display
- Highly reproducible
- Easy to use
- Flexible
- Ideal for all materials
- User friendly
- Easy service access

The PICO 155P is variable speed precision wafering saw for sectioning materials with extreme accuracy. The PICO 155P precision saw is a very useful tool for sectioning metals, ceramics, electronics and other engineered materials.



Features

- Variable wheel speeds from 50-1500 rpm with digital feedback for constant speed control
- Accepts thin 3 (75 mm) to 7-inch (175 mm) wafering blade diameters
- Capable of using 6 and 7-inch abrasive blades with 1/2-inch arbor (12.5 mm)
- Easy to use
- Built-in digital micrometer



- Counter balanced specimen loading
- Sliding weight gravity feed loading up to 1500 grams
- Built-in coolant system with internal pump
- Optional cutting table attachment for manual cutting of large flat specimens, including PCB's
- Standard vise fixtures included with saw include:
 - Universal specimen vise
 - Double parallel vise
 - Vise for adhering sample
 - Irregular shaped specimen vise
- Blade dressing fixture included with PICO 155P
- Magnetic safety switch
- Emergency stop

Specimen Fixturing Vises

All the specimen vises for the PICO 155P enable the operator to load the sample into the fixture prior to attaching it to the cutter. Fixturing of round, square, elongated and other irregular shaped specimens can be easily accomplished.

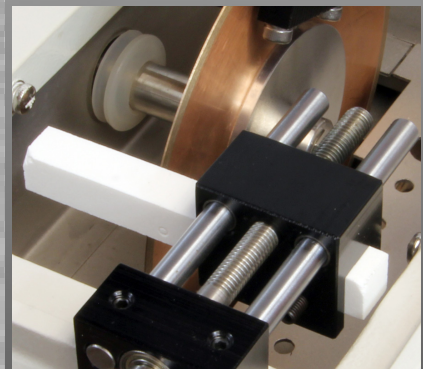
PICO 155P

Precision Saw

PICO 155P
3, 4, 5, 6 & 7-inch
blade diameters

Applications:

- Electronics
- IC circuits
- PCB boards
- Bones
- Minerals
- Ceramics
- Metals



PACE Technologies
3601 E. 34th St
Tucson, AZ 85713 USA
Phone +1 520-882-6598
FAX +1 520-882-6599
www.metallographic.com
email_pace@metallographic.com

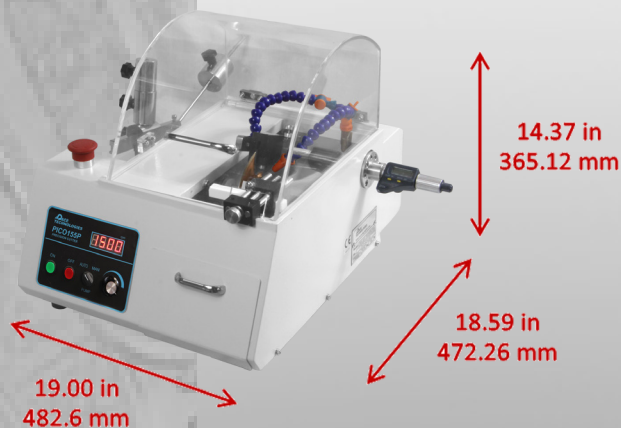


Machinery directive 2006/42/EC
Low Voltage Directive 2006/95/EC
Electromagnetic Compatibility directive 2004/108/EC

PACE[®]
TECHNOLOGIES
www.metallographic.com

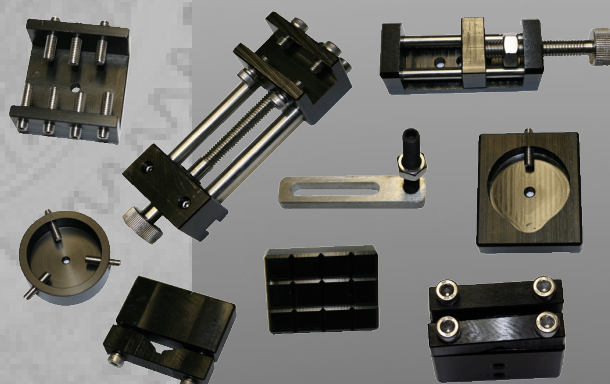
Technical Specifications:

Benefits:	Specification:
Coolant	Built-in Pump
Cutting capacity	2-inch (50 mm)
Cutting speed	50-1500 rpm
Cutting load	Variable up to 1500 grams
Positioning range (x-axis)	1-inch (25 mm)
Wheel size	Min 3-inch (75 mm) Max 7-inch (175 mm)
Motor power	125 W - 24V (110V / 220V)
Dimensions (WxDxH)	Hood closed: 19 x 23 x 14.5-inch (480 x 580 x 368 mm) Hood open: 19 x 29 x 19-inch (480 x 740 x 370 mm)
Weight	66 lbs (30 kg)



Specimen Visas and Attachments

Universal single saddle chuck	P150-702
Large single saddle with lip	P150-702b
Double sided saddle chuck	P150-703
Irregular shaped specimen vise	P150-706
Round and 1.25-inch mounted specimens	P150-707
Vise for adhering specimens	P150-709
Specimen teardrop holder for 0.6-1.6-in (18-40 mm) diameter	P150-710
Fastener vise for longitudinal sectioning	P150-711
Dressing unit	P150-701
Cutting table attachment for large samples	P150-601



Wafering Blades (1/2-inch, 12.5 mm arbor)

Description	3-inch	4-inch	5-inch	6-inch	7-inch
Fine grit / low conc.	WB-0030LC	WB-0040LC	WB-0050LC	WB-0060LC	WB-0070LC
Medium grit / low conc.	WB-0035LC	WB-0045LC	WB-0055LC	WB-0065LC	WB-0075LC
Medium grit / high conc.	WB-0035HC	WB-0045HC	WB-0055HC	WB-0065HC	WB-0075HC
CBN	n.a.	WCBN-0045	WCBN-0055	WCBN-0065	WCBN-0075
CBN/Diamond Hybrid Wafering Blade	n.a.	WCBND-0045	WCBND-0055	WCBND-0065	WCBND-0075
Electroplated Diamond	n.a.	EPD-0040	EPD-0050	EPD-0060	EPD-0070

Cutting Fluids

Description	Catalog Number
DIACUT Dressing Sticks (1/2" x 1/2" x 4 1/2")	DRES-0010
DIACUT water-based cutting fluid (16 oz)	WL-3000-16
DIACUT water-based cutting fluid (32 oz)	WL-3000-32
DIACUT anti-corrosion cutting fluid (16 oz)	WL2-3000-16
DIACUT anti-corrosion cutting fluid (32 oz)	WL2-3000-32
DIACUT oil-based cutting fluid (16 oz)	OL-3000-16
DIACUT oil-based cutting fluid (32 oz)	OL-3000-32

